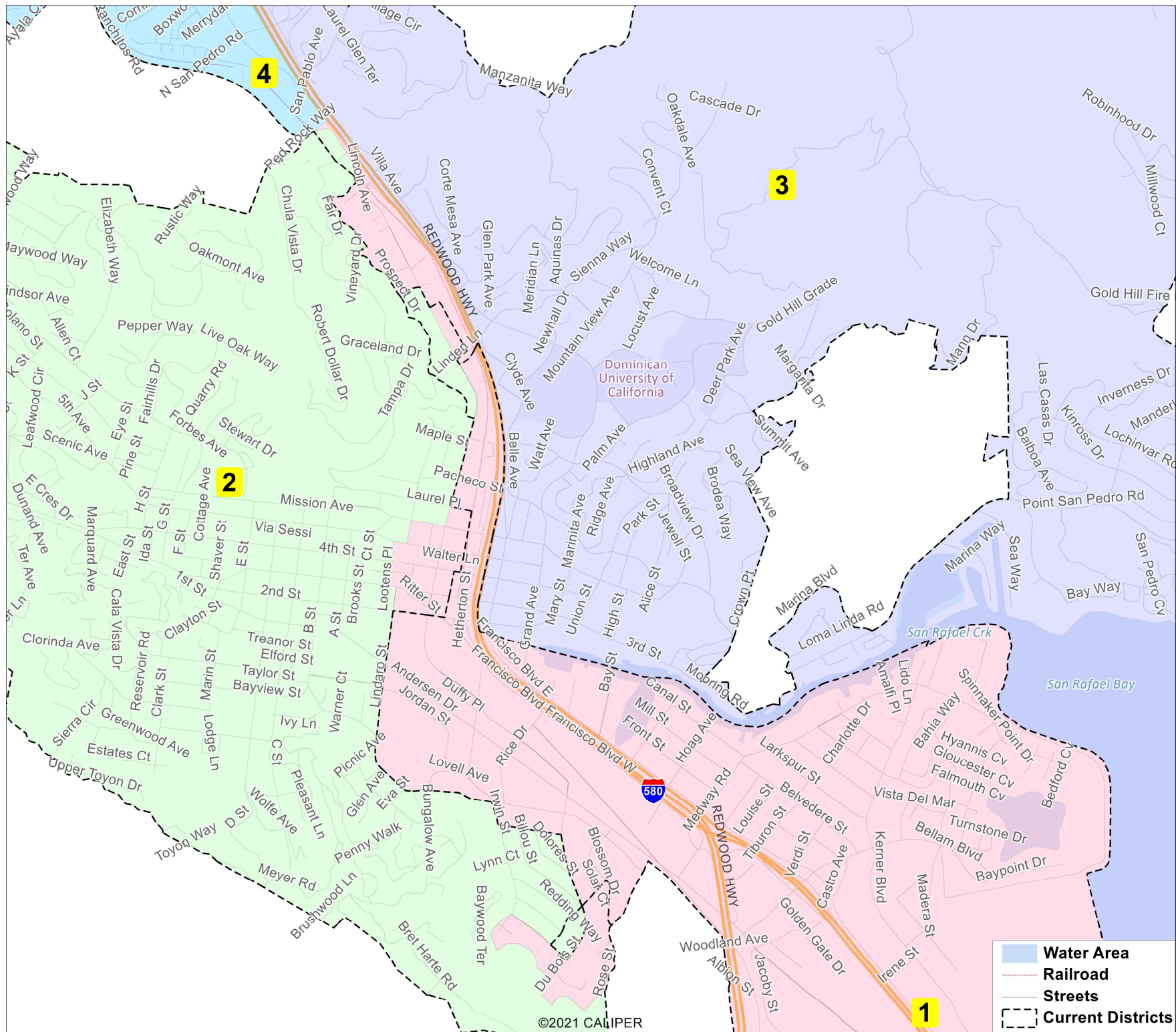


San Rafael Redistricting 2022

NDC Minimal Change Map

- Water Area
- Railroad
- Streets
- Current Districts



NDC Minimal Change						
District		1	2	3	4	Total
	Total Pop	15,638	15,700	14,849	15,146	61,333
	Deviation from ideal	305	367	-484	-187	851
	% Deviation	1.99%	2.39%	-3.16%	-1.22%	5.55%
Total Pop	% Hisp	78.4%	21%	19%	18%	34%
	% NH White	13%	65%	66%	64%	52%
	% NH Black	2%	2%	3%	2%	2%
	% Asian-American	5%	7%	9%	12%	8%
Citizen Voting Age Pop	Total	4,757	10,771	10,539	10,336	36,403
	% Hisp	41%	8%	7%	10%	12%
	% NH White	43%	83%	80%	77%	75%
	% NH Black	3%	3%	3%	1%	3%
	% Asian/Pac.Isl.	13%	5%	8%	9%	8%
Voter Registration (Nov 2020)	Total	3,738	10,355	10,006	9,835	33,934
	% Latino est.	30%	7%	7%	7%	10%
	% Spanish-Surnamed	28%	7%	6%	6%	9%
	% Asian-Surnamed	10%	3%	4%	4%	4%
	% Filipino-Surnamed	1%	1%	1%	1%	1%
	% NH White est.	55%	86%	87%	87%	83%
Voter Turnout (Nov 2020)	Total	2,957	9,179	8,887	8,743	29,766
	% Latino est.	28%	7%	6%	7%	9%
	% Spanish-Surnamed	26%	6%	6%	6%	8%
	% Asian-Surnamed	10%	3%	3%	4%	4%
	% Filipino-Surnamed	1%	1%	1%	1%	1%
	% NH White est.	58%	86%	87%	87%	84%
Voter Turnout (Nov 2018)	Total	2,084	7,721	7,433	7,345	24,583
	% Latino est.	20%	6%	5%	5%	7%
	% Spanish-Surnamed	19%	5%	5%	5%	6%
	% Asian-Surnamed	8%	3%	3%	4%	4%
	% Filipino-Surnamed	1%	1%	1%	1%	1%
	% NH White est.	66%	88%	89%	89%	86%
ACS Pop. Est.	Total	16,077	14,087	13,938	14,795	58,898
Age	age0-19	36%	18%	20%	23%	25%
	age20-60	54%	57%	46%	45%	50%
	age60plus	10%	26%	34%	32%	25%
Immigration	immigrants	47%	18%	19%	23%	27%
	naturalized	17%	39%	60%	49%	34%
Language spoken at home	english	27%	82%	78%	71%	64%
	spanish	65%	12%	8%	13%	25%
	asian-lang	4%	2%	5%	5%	4%
	other lang	3%	4%	9%	11%	7%
Language Fluency	Speaks Eng. "Less than Very Well"	46%	7%	8%	12%	19%
Education (among those age 25+)	hs-grad	32%	29%	26%	26%	28%
	bachelor	14%	38%	36%	32%	31%
	graduatedegree	9%	22%	25%	29%	22%
Child in Household	child-under18	48%	22%	24%	27%	29%
Pct of Pop. Age 16+	employed	73%	71%	60%	59%	66%
Household Income	income 0-25k	20%	12%	9%	15%	13%
	income 25-50k	24%	16%	14%	11%	16%
	income 50-75k	20%	11%	12%	12%	13%
	income 75-200k	26%	38%	37%	39%	36%
	income 200k-plus	11%	23%	28%	24%	22%
Housing Stats	single family	31%	54%	75%	58%	56%
	multi-family	69%	46%	25%	42%	44%
	rented	76%	58%	34%	39%	50%
	owned	24%	42%	66%	61%	50%
Total population data from the 2020 Decennial Census.						
Surname-based Voter Registration and Turnout data from the California Statewide Database.						
Latino voter registration and turnout data are Spanish-surname counts adjusted using Census Population Department undercount estimates. NH White and NH Black registration and turnout counts estimated by NDC. Citizen Voting Age Pop., Age, Immigration, and other demographics from the 2015-2019 American Community Survey and Special Tabulation 5-year data.						